

## Transportation

- Seohaean Expressway**  
Seohaean I.C. (Gochang I.C., Namguchang I.C.)
- Honan Expressway**  
Honam I.C., Heungdeok I.C., Bangwhan I.C.
- Gochang-Damyang Expressway**  
Suncheon → Damyang Expressway 388  
+ Gochang (Honam Expressway)  
+ Gochang I.C. (Seohaean Expressway)
- Gangnam Express Bus Terminal**  
→ Gochang Terminal (Approx. 3 hours)
- Seoul Station → Jeongeup Station**  
(Take a bus from Jeongeup to Gochang)

## Gochang-gun Website

<https://www.gochang.go.kr>

## Visit Gochang Website

<https://www.gochang.go.kr/tour>

## Important Phone Numbers

### Gochang Tourist Information Center

- World Heritage Division: 063)960-7948
- Gochang-gyeongseong: 063)960-8055
- Doimen Museum: 063)960-8676
- Mujangmyeon Office and Fortress: 063)960-8347
- Midang Poem-literature Hall: 063)960-8037
- Seonunsan Provincial Park: 063)960-8887
- Pansori Museum: 063)960-8905
- Gonghak (Heonwon) Hall: 063)964-3894
- Ungok Wetland Visitor Center: 063)964-7076

### Transportation

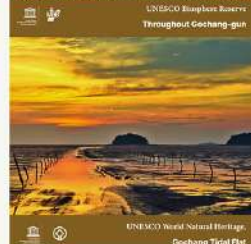
- Gochang Culture Terminal: 063)960-3368
- Train Information (Gochang Station): 1544-7789

### Local Specialty Products Market

- 1st Sales Store: 063) 564-2062
- 2nd Sales Store (Gongnamsan-Nonghyup): 063) 561-3443
- 2nd Sales Store (Gongnamsan-Owamra): 063) 564-6250
- 3rd Sales Store (Dongdal Service Area): 063) 561-6717
- Sunyeon Wellness Plaza (Loch Cheese): 010-7767-2270

For more detail, please visit the Gochang-gun Office website.

## UNESCO World Heritage Site



## Gochang-gun Recommended Travel Courses

### UNESCO World Heritage Course



### History & Culture Course



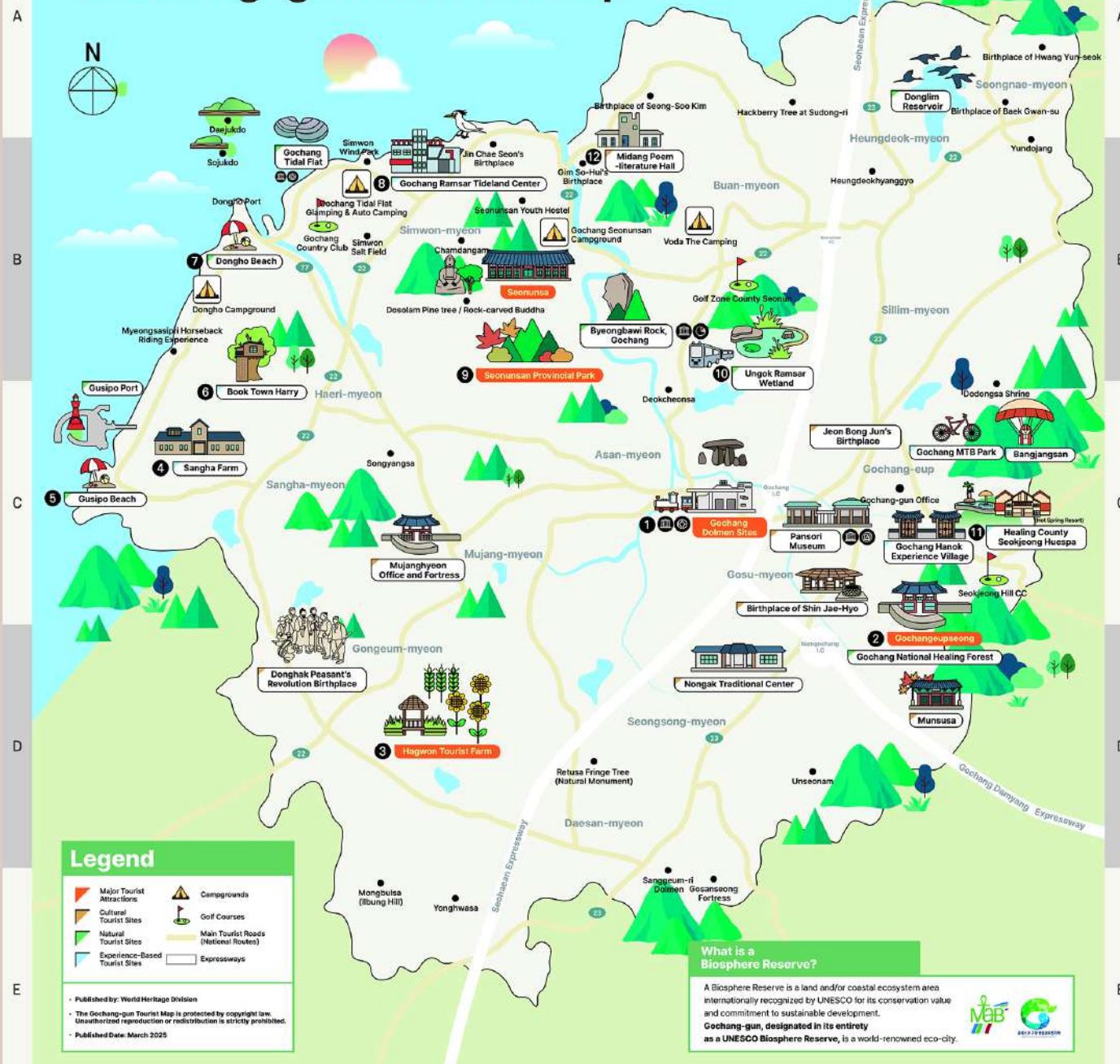
### Healing Course



### Travel Times to Major Tourist Attractions

- From Gochang Bus Terminal
- 1 Dolmen Sites (90m, 7 min by car)
  - 2 Gochang-gyeongseong (334m, 2 m in by car, 15 min on foot)
  - 3 Hagwon Tourist Farm (220m, 24 min by car)
  - 4 Sangha Farm (277m, 29 min by car)
  - 5 Gusepo Beach (206m, 30 min by car)
  - 6 Book Town Harry (245m, 26 min by car)
  - 7 Dongho Beach (276m, 26 min by car)
  - 8 Gochang Ramsar Tideland Center (287m, 27 min by car)
  - 9 Seonunsan Provincial Park (100m, 16 min by car)
  - 10 Ungok Ramsar Wetland (106m, 12 min by car)
  - 11 Seokjeong Hot Springs (476m, 9 min by car)
  - 12 Midang Poem-literature Hall (208m, 22 min by car)

# Gochang-gun Tourist Map



### Legend

Major Tourist Attractions	Campgrounds
Cultural Tourist Sites	Golf Courses
Natural Tourist Sites	Main Tourist Roads (National Routes)
Experience-Based Tourist Sites	Expressways

Published by: World Heritage Division  
 The Gochang-gun Tourist Map is protected by copyright law. Unauthorized reproduction or redistribution is strictly prohibited.  
 Published Date: March 2025

### What is a Biosphere Reserve?

A Biosphere Reserve is a land and/or coastal ecosystem area internationally recognized by UNESCO for its conservation value and commitment to sustainable development.  
**Gochang-gun, designated in its entirety as a UNESCO Biosphere Reserve, is a world-renowned eco-city.**

## UNESCO WORLD HERITAGE CITY

A UNESCO World Heritage City steeped in rich culture and enduring charm



